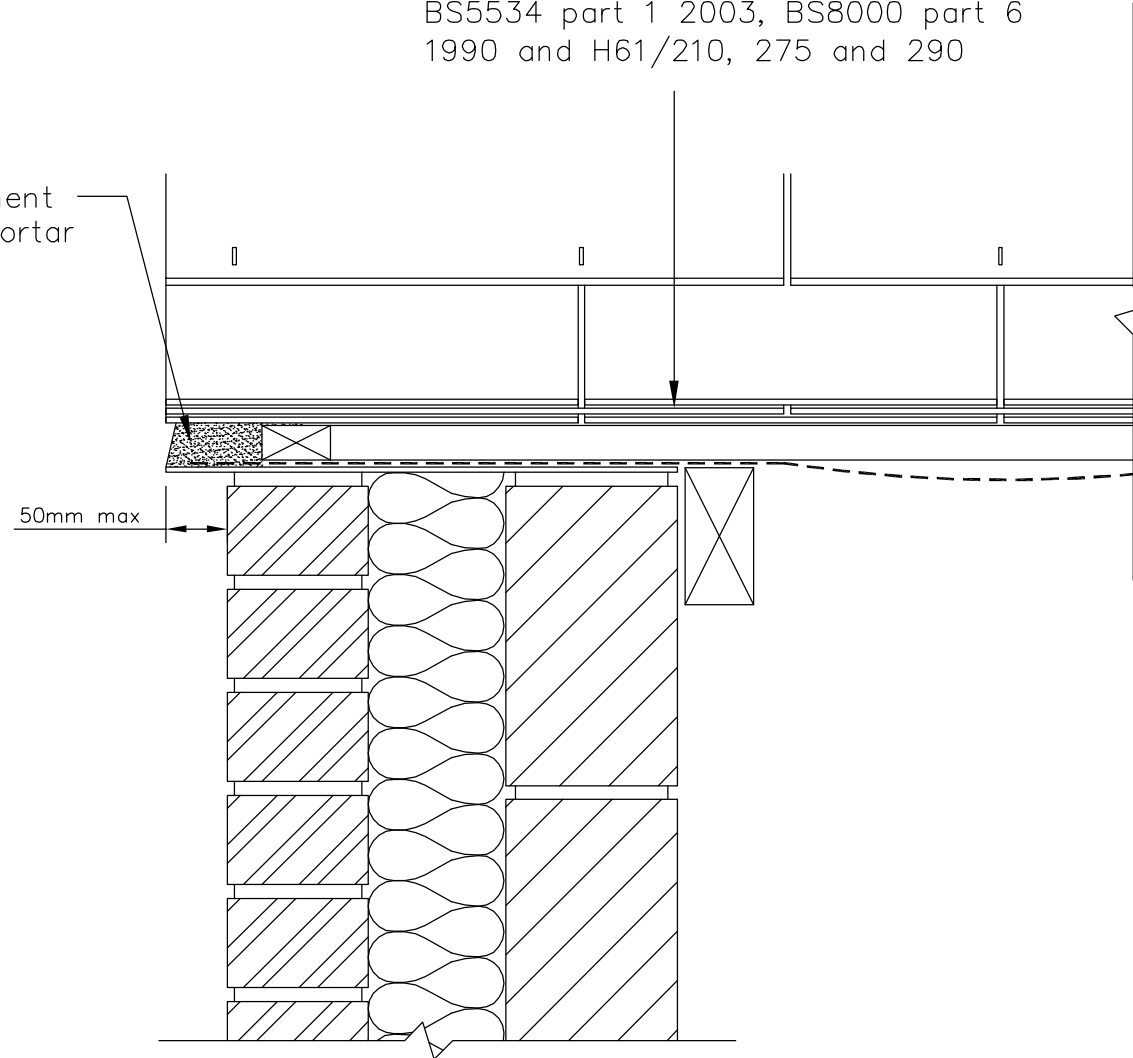


Fixing in accordance with the
manufacturers printed instructions,
BS5534 part 1 2003, BS8000 part 6
1990 and H61/210, 275 and 290

Cembrit fibre Cement
undercloak and mortar
pointing



CEMBRIT LIMITED
VERGE WITH CEMENT POINTING TYPICAL DETAIL
600x300 JUTLAND (FIBRE CEMENT) SLATE
DRG No. 110 H61/105 and 445